

Figure 1

11/11/2019 10:00:00 AM

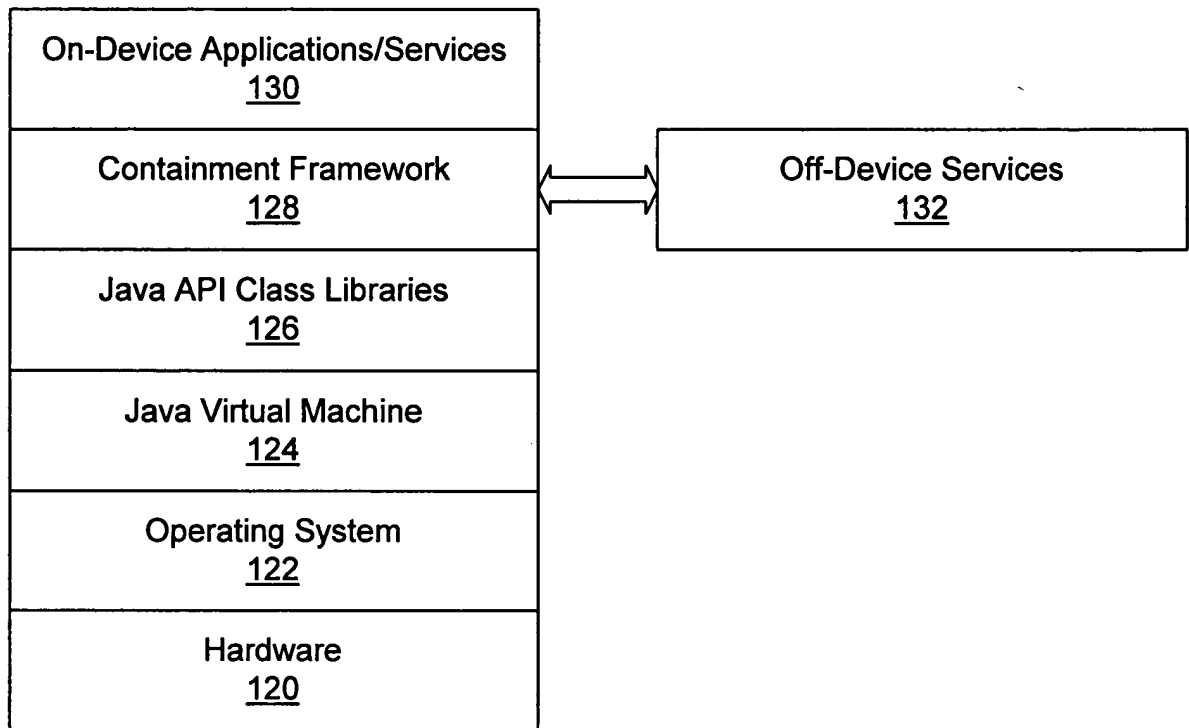


Figure 2

FIG. 3 is a block diagram of a system architecture. The system includes a printer 130, an internet television 132, a smart cellular phone 134, a lookup service 136, and an internet 154. The printer 130 and internet television 132 are connected to the lookup service 136. The smart cellular phone 134 is connected to the lookup service 136 and the internet 154. The smart cellular phone 134 includes a containment framework interface 142, a containment framework 144, a lookup service 146, a web browser 148, an email client 150, and a personal organizer 152.

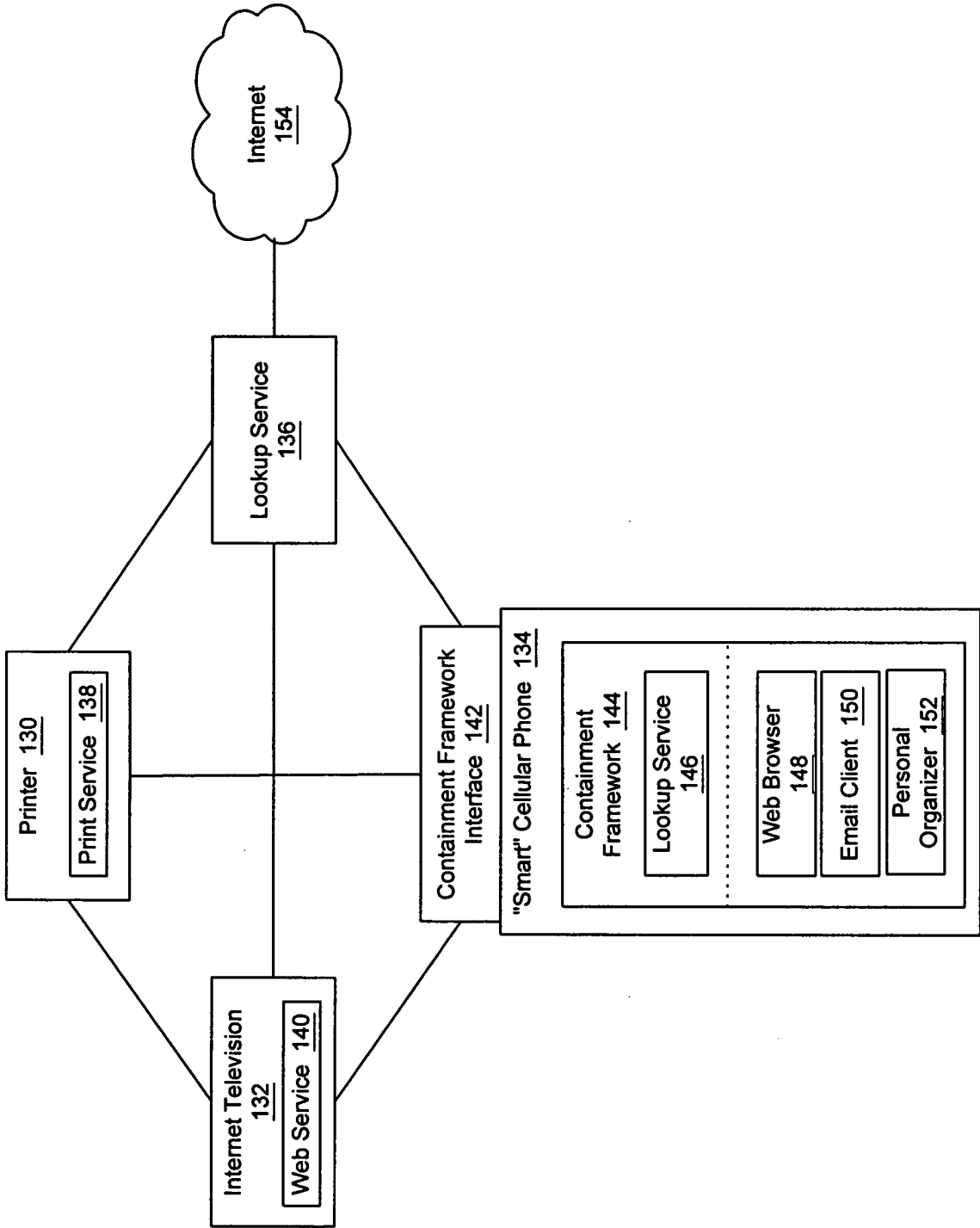


Figure 3

11/11/2019 10:00 AM

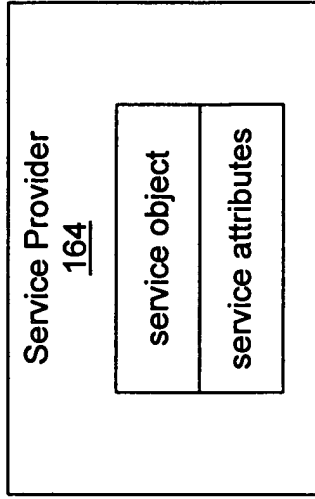
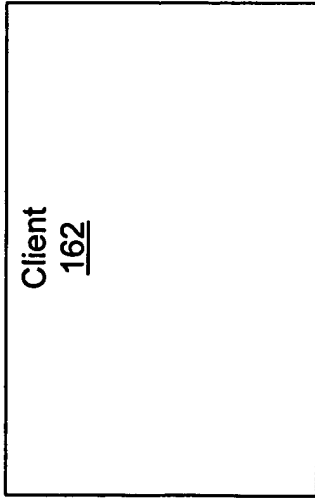
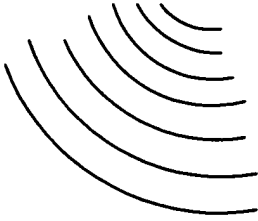
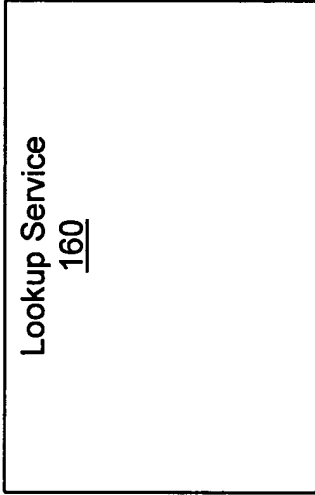


Figure 4

11/11/2011 10:11:11 AM

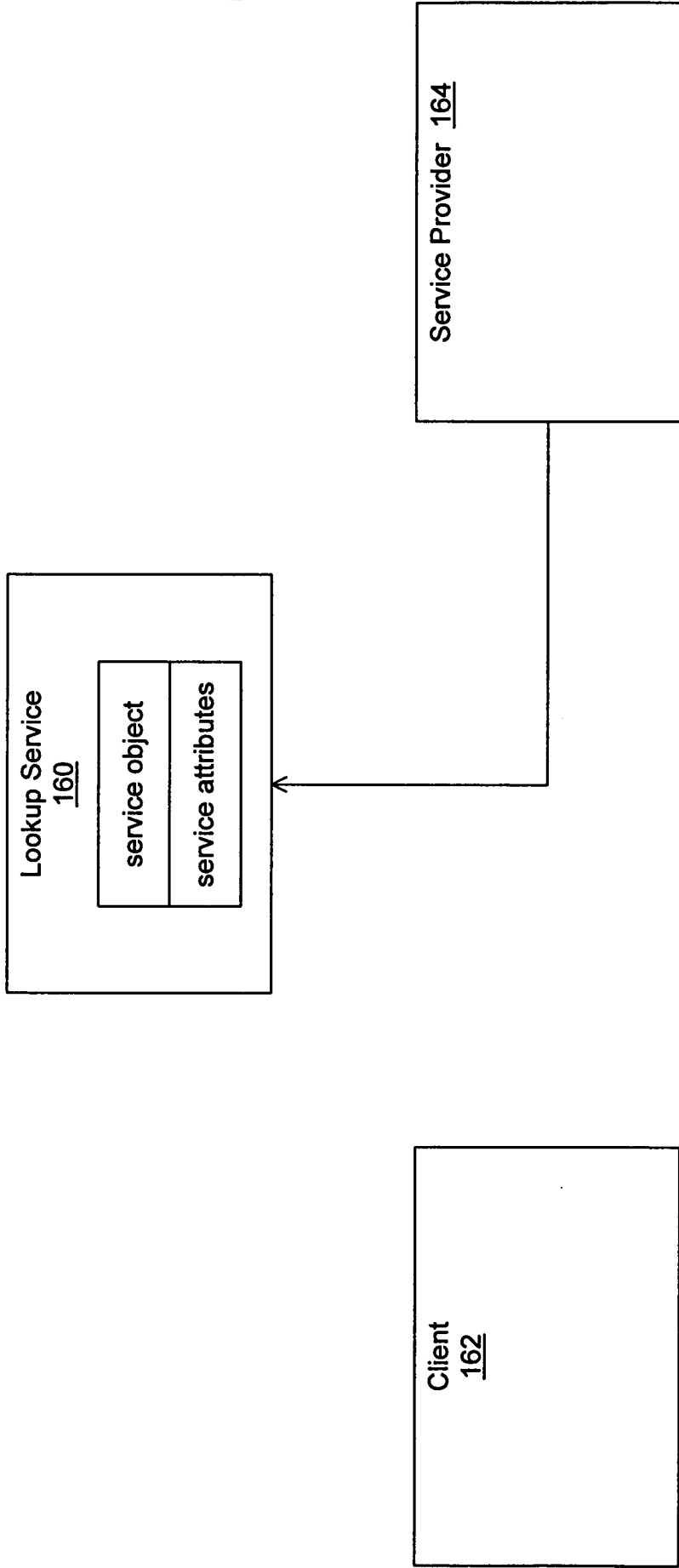


Figure 5

FIG. 6 is a block diagram of a system architecture. The diagram shows three main components: a Lookup Service 160, a Client 162, and a Service Provider 164. The Lookup Service 160 is connected to the Client 162, which in turn is connected to the Service Provider 164. The Lookup Service 160 contains a service object and service attributes. The Client 162 contains a service object. The Service Provider 164 is a separate component.

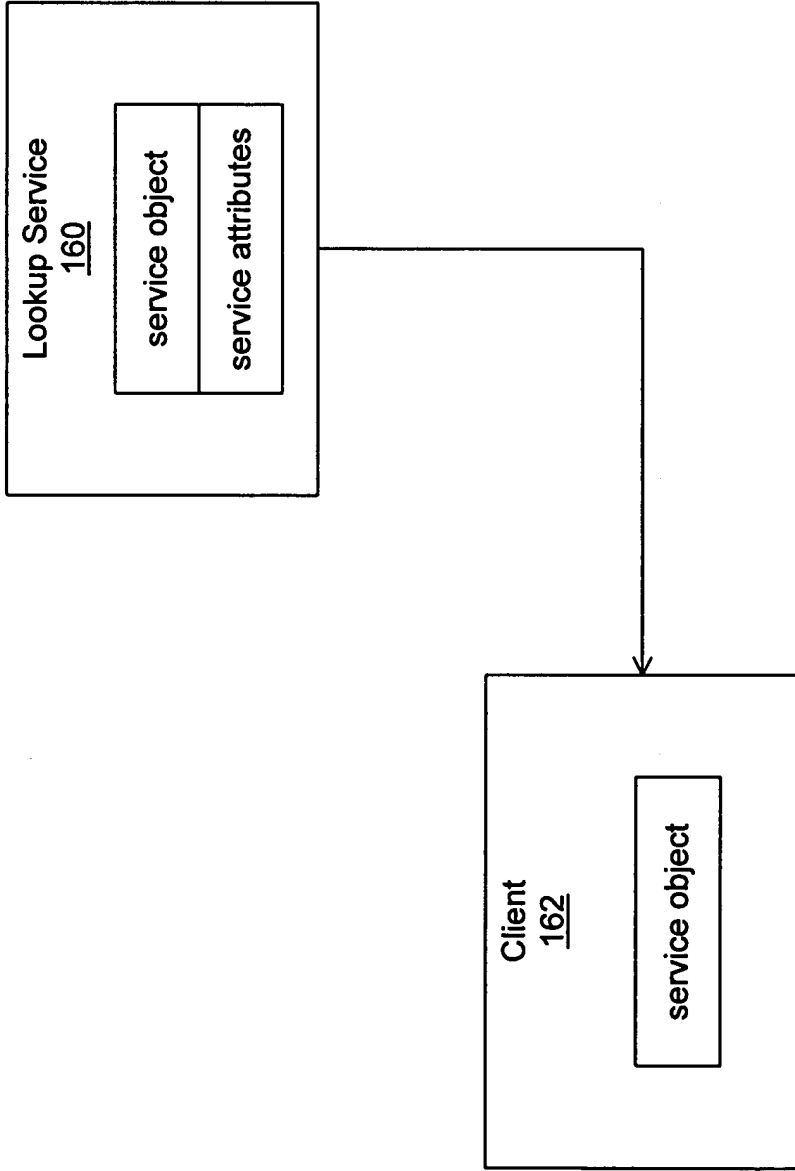


Figure 6

11/15/2001 10:00 AM

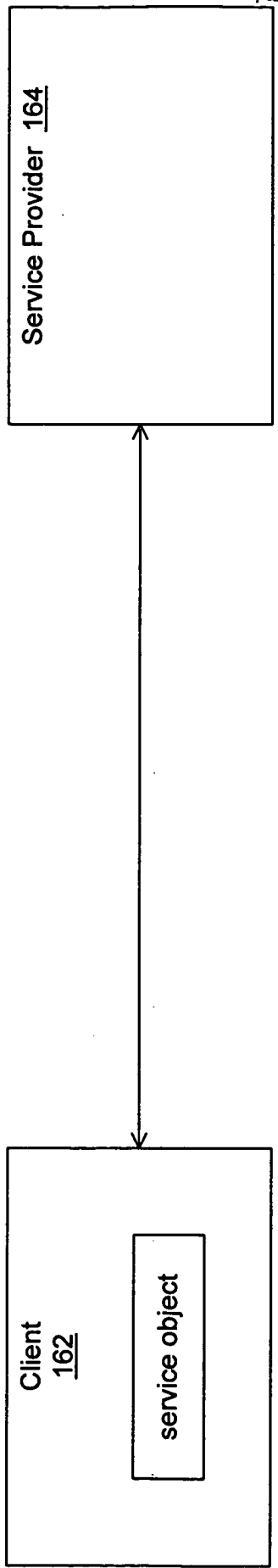
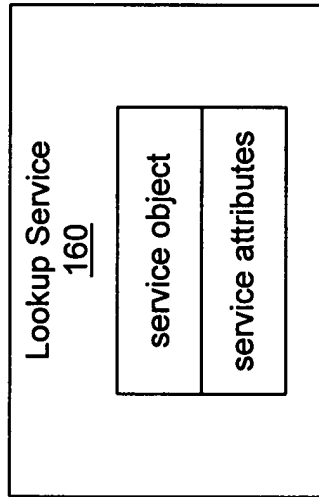


Figure 7

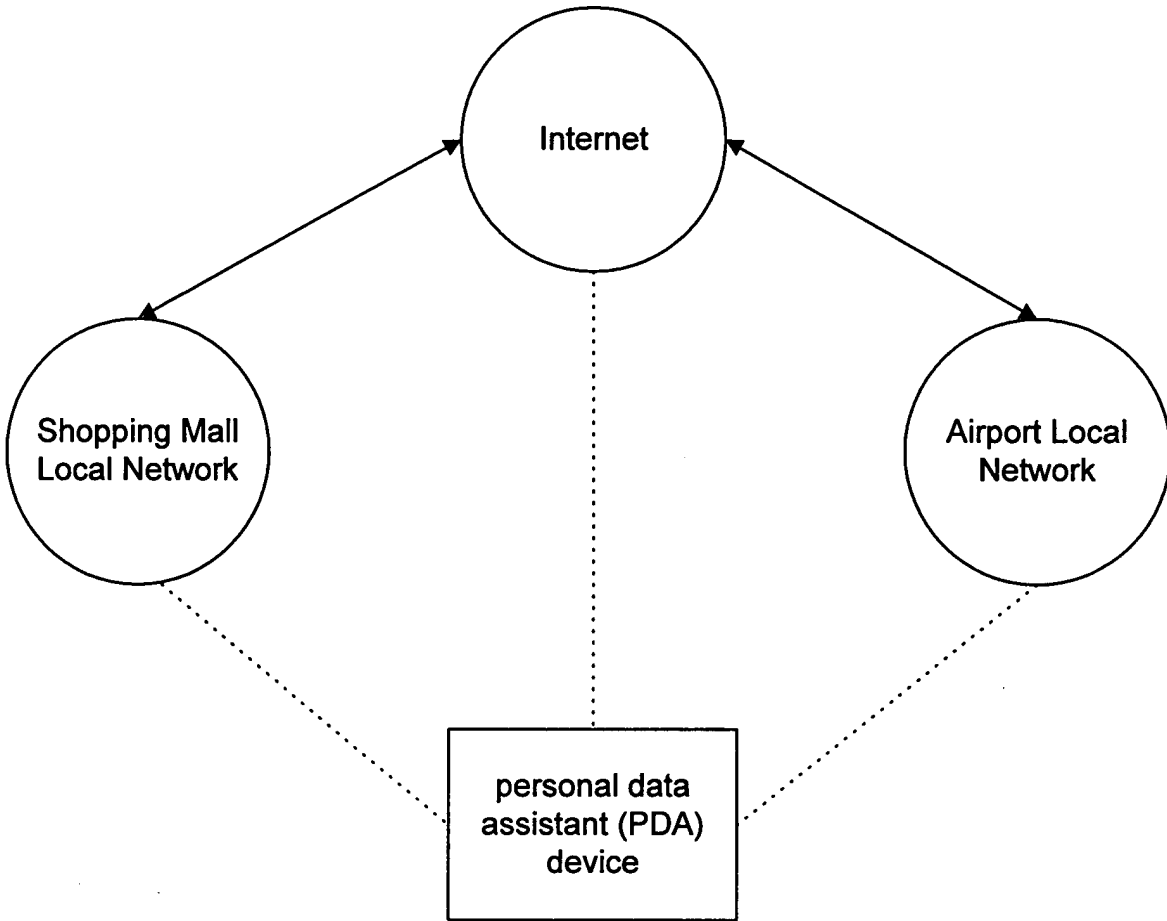


Figure 8



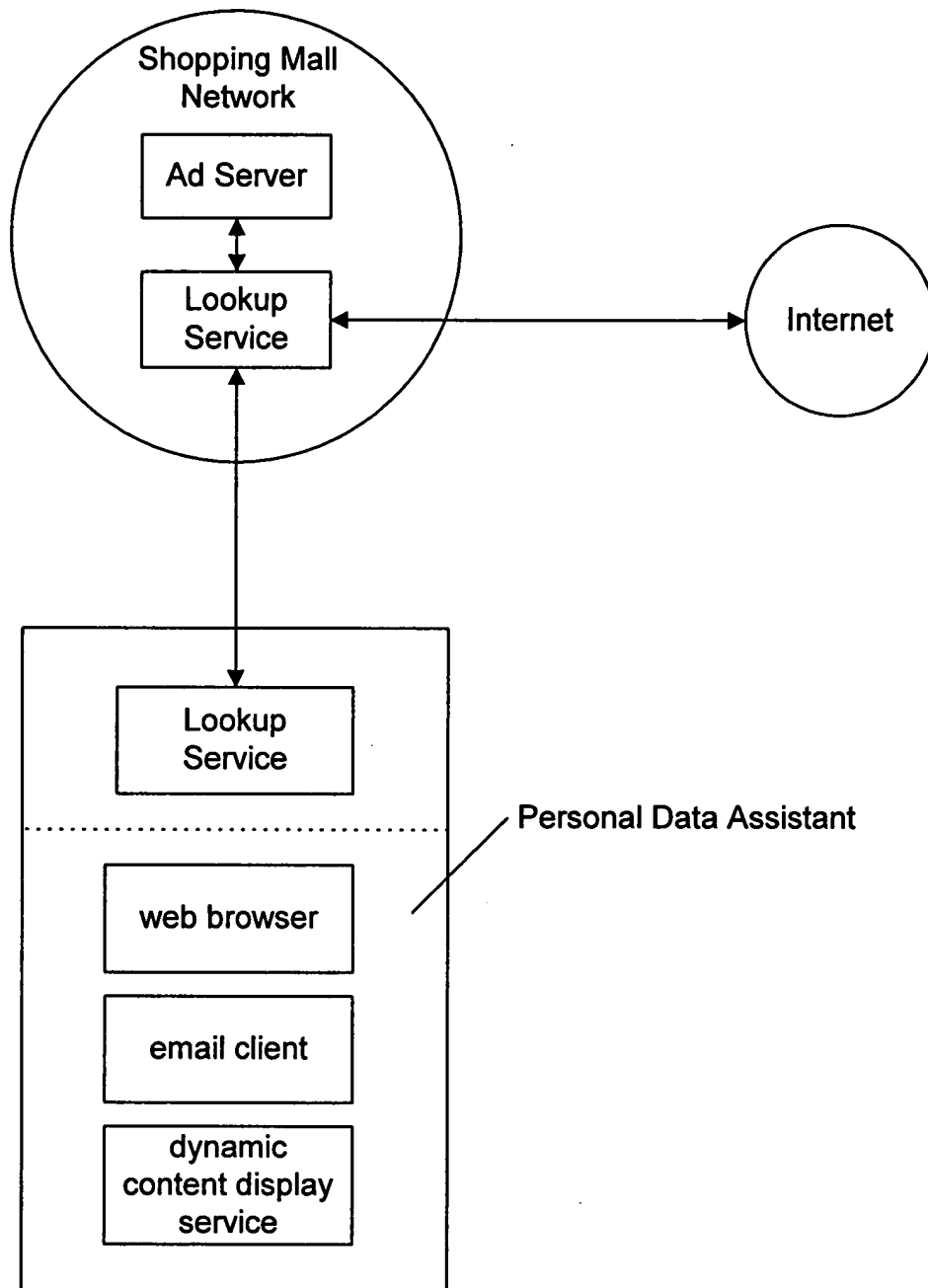


Figure 9

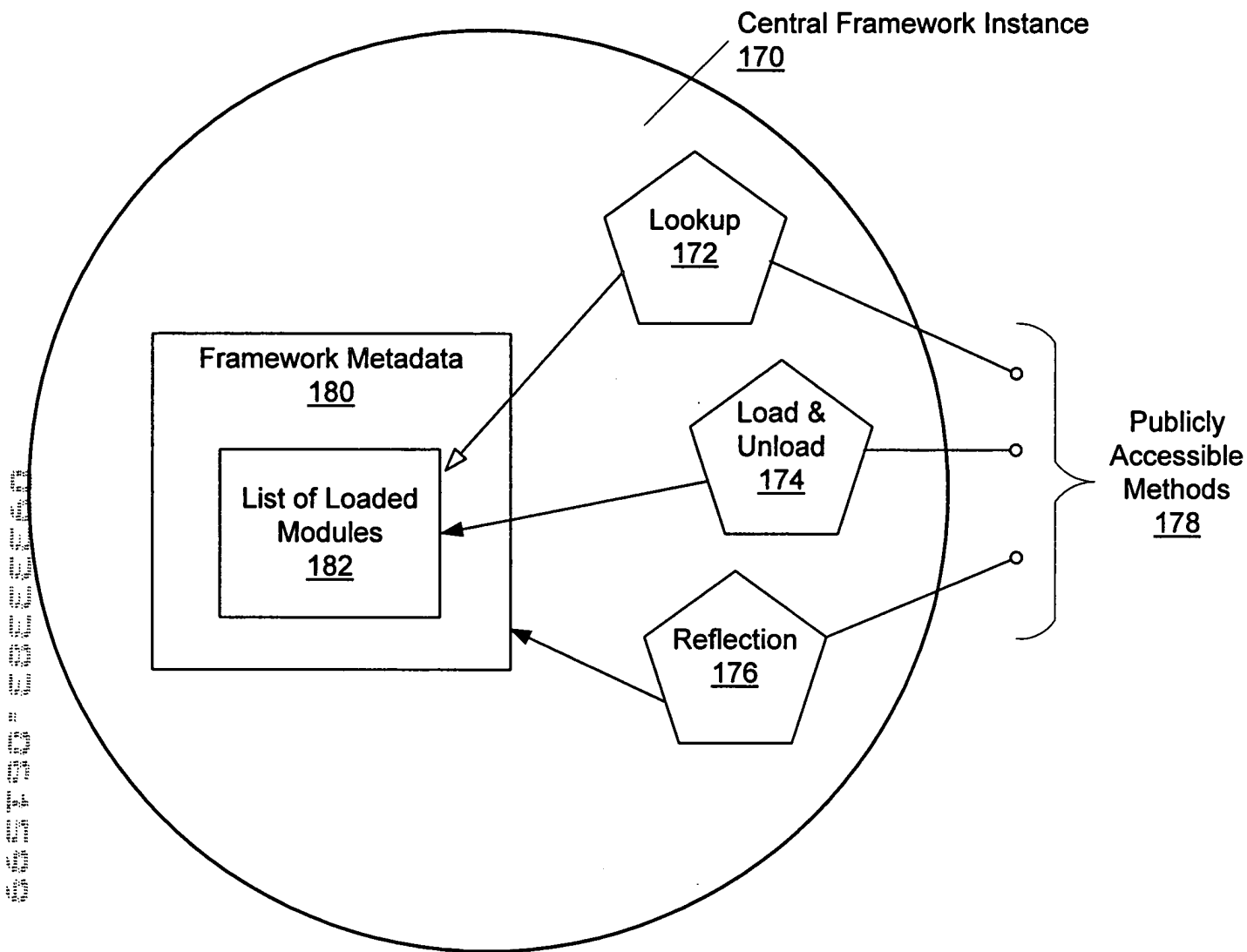
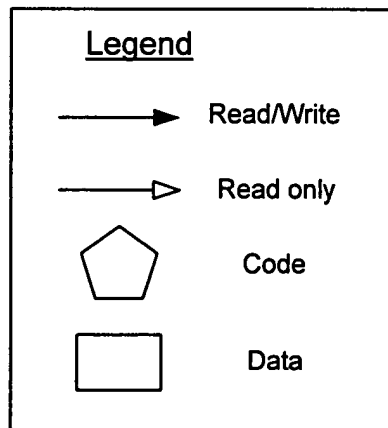


Figure 10



Print Manager 190

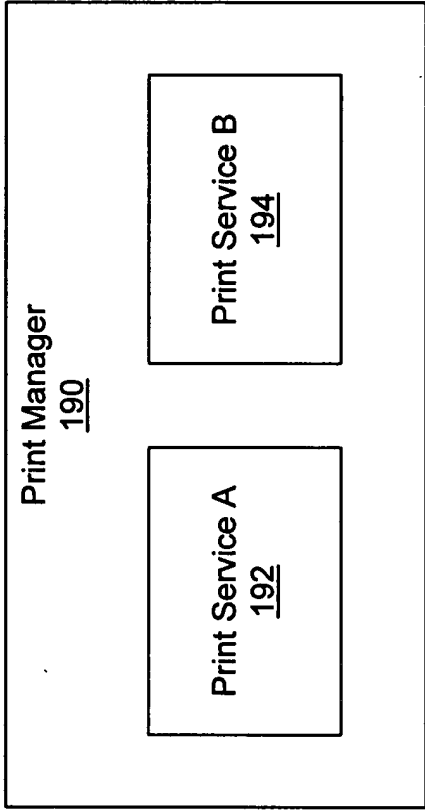


Figure 11

Print Service B 194

Request Listener

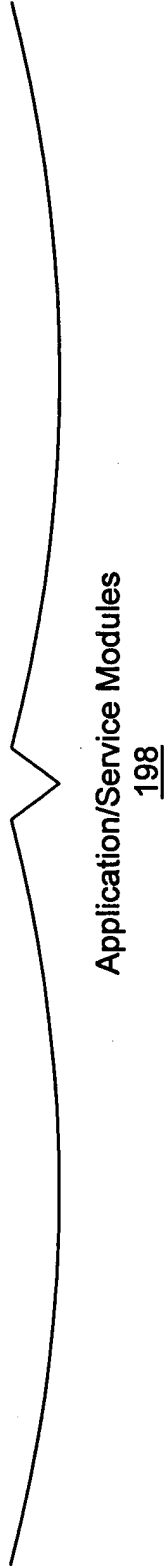
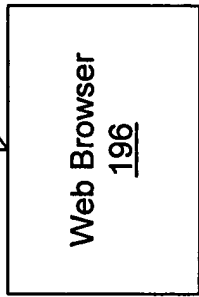
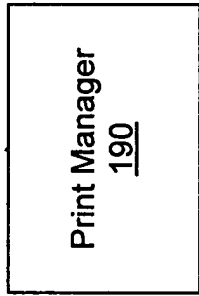
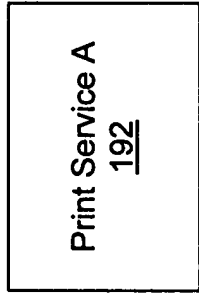
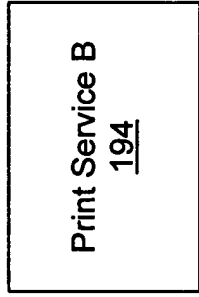


Figure 12

Personal Information Manager Parcel  
200

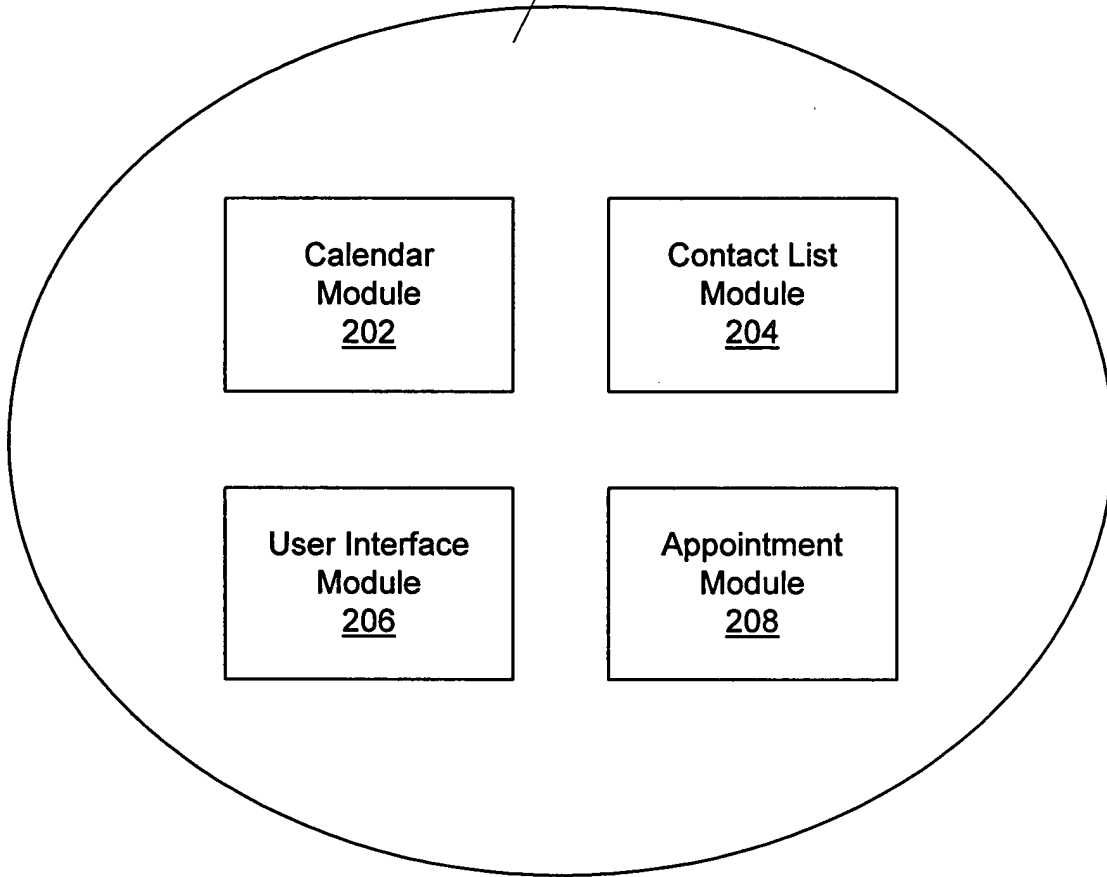


Figure 13

central framework instance receives a module lookup request from a module 300

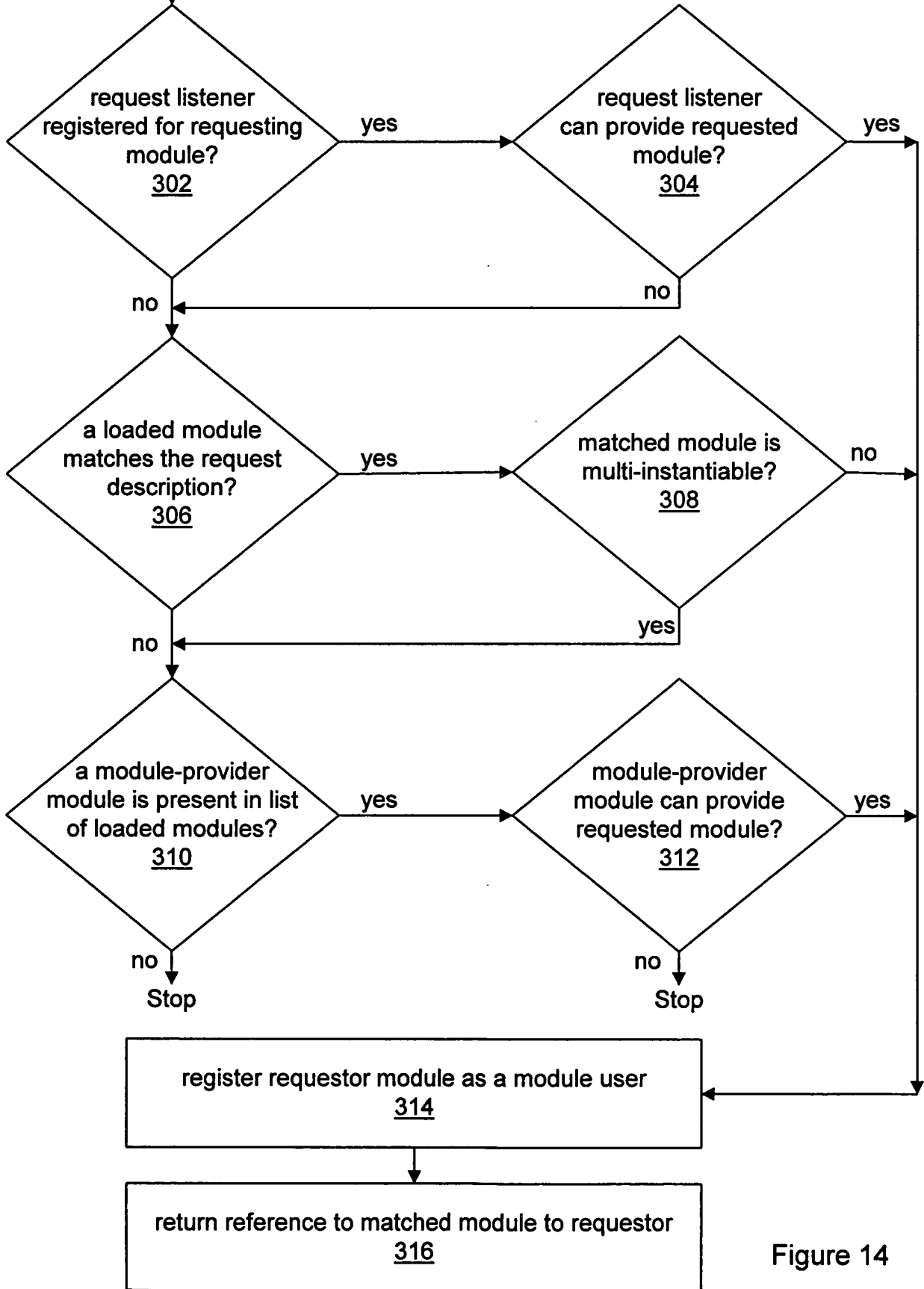


Figure 14

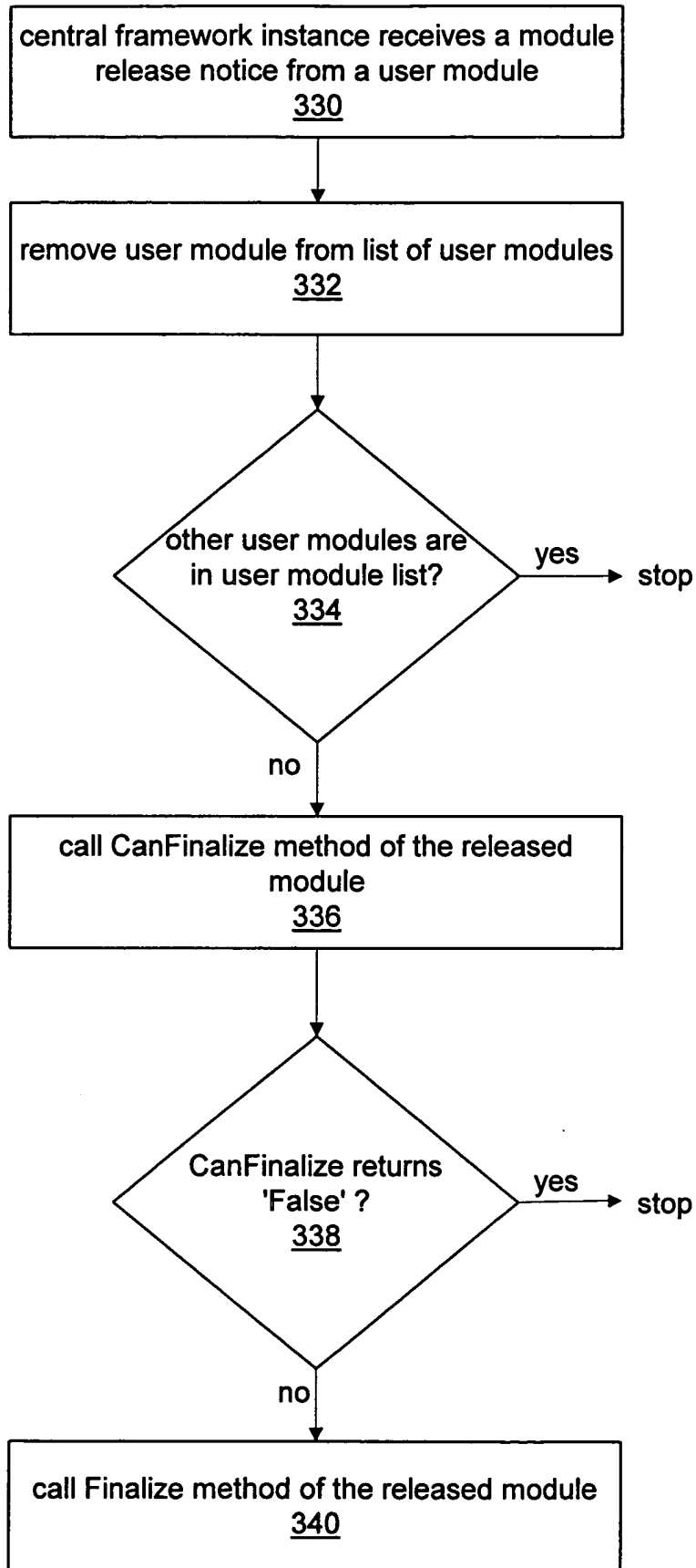


Figure 15